



 **PROXIMA**

**Proxima Connect**

# WHAT IS PROXIMA CONNECT?



Proxima is a dynamic marketplace, empowering real estate professionals and property developers with innovative systems and exceptional services.

With Proxima Connect, we're now extending our reach to Mortgage Brokers and Financial Planners, offering a tailored program designed to unlock new opportunities for growth and expand networks, helping businesses thrive in an ever-evolving market.

## COMPLEMENTARY PROGRAM ESSENTIALS

By subscribing to Proxima Connect we will deliver the following benefits to you at no cost:



An invitation to join Proxima Connect as a Proxima Sales Promotor. This will be aligned with what we refer to as a Master Agent.



Access to Proxima App for mobile and desktop.



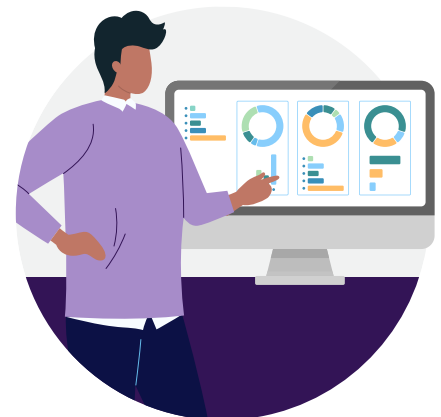
Access to view Proxima Properties for sale via our independent agent network.



Invitations to attend events providing educational materials on the property market, projects, technology and future trends.



Access to weekly communications delivered in an emagazine format.



## SOLUTIONS AVAILABLE

At an additional cost, the following systems and services are available:

- 1 Proxima CRM**  
A powerful tool to manage your client data, with Marketing templates included to help you promote and communicate market and project launches, updates and promotions.
- 2 Proxima Web**  
A fast to launch website, including 7 pages of content and listings of all Proxima properties
- 3 Proxima Hub**  
For your coworking needs: From office suites, to event spaces, we have you covered.



## PREMIUM BENEFITS

Sign up as a Proxima Connect Partner and the pathway to new financial opportunities awaits.

To open us new revenue earnings, we have the following benefits on offer

- 1** Commission payments for the referral and sale of Proxima properties to your client base
- 2** Invitations to contribute to Proxima Social media content including but not limited to blogs, podcasts and webinars.
- 3** Invitations for you and your qualified clients to attend exclusive events held in restaurants across Sydney, Melbourne and Brisbane with leading Property Developers and Proxima.

To enjoy the full benefits of the Proxima Connect Advantage, there are two very simple pathways you can follow.

### Pathway 1

I have a Class 2 Real Estate Agent in my organization

OR

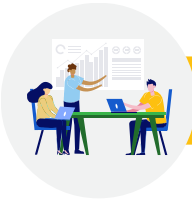
### Pathway 2

I do not have a Class 2 Real Estate Agent in my organization



## Pathway 1

- 1 Email [proximaconnect@proxima.com.au](mailto:proximaconnect@proxima.com.au) and include permission to communicate with you, details of Proxima Connect, your contact details and the name, contact details and licence number of your Class 2 Agent. They must be an employee of your business.
- 2 Attend meeting with Proxima Executive team for onboarding and master agent introduction
- 3 Accept invitation to download and register as Class 2 Sub Agent on Proxima App
- 4 Start enjoying the premium Proxima Connect Advantage



## Pathway 2

1

Identify or Recruit an individual to your organisation who can develop skills as a Class 2 Real Estate Agent

2

Enrol the individual into Proxima Academy

a

[Assistant Agent Course \\$695](#)

b

[Certificate IV in Real Estate: Group A Residential Sales \\$698](#)

c

[Compliance Certification Pack \\$300](#)

3

Enrol the individual in TAFE NSW Course Over quoting

4

Upon achievement of Class 2 Agent Licence, follow the Pathway 1 steps and start enjoying the Proxima Connect Advantage

5

Attend meeting with Proxima Executive team for onboarding and master agent introduction

6

Accept invitation to download and register as Class 2 Sub Agent on Proxima App



**Join Proxima Connect today and start enjoying the premium Connect Advantage**

[enquiry@proxima.com.au](mailto:enquiry@proxima.com.au)  
(02)7908 3965

[www.proxima.com.au](http://www.proxima.com.au)