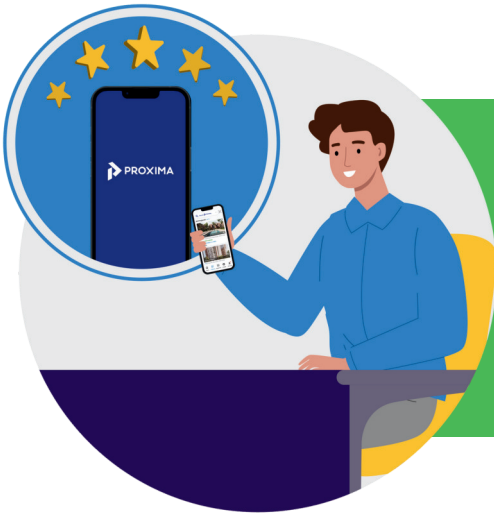




# Grow your Real Estate business with Proxima



Proxima Web is designed for real-estate agents to go to market quickly and with impact.

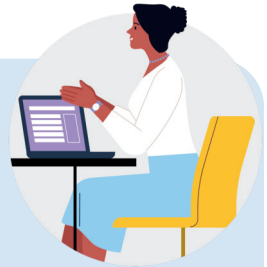


Proxima Web offers you simplicity and rapid launch of your website to promote you and your business to the world. You can expect to receive all the essentials of a website:

• **7 pages of content including:**

- ✓ Home Page
- ✓ About Us
- ✓ Proxima Projects
- ✓ Your projects and properties for sale
- ✓ Information Centre
- ✓ Services
- ✓ Contact Us / Lead Form

- **Multiple options of templates available to select for each of the seven pages**



• **Optimised for Search**

(So more people can find you)



• **Analytics and Reporting**



With additional extras added in. We call this the Proxima Advantage.

### Proxima Advantage 1

Selling made easy

Proxima Web is connected with our Proxima Platform. This means you will have

- Access to a portfolio of over a trillion dollars of properties for sale with project pricing, brochures and content for your customers: With the projects listed on your website
- Management and allocation of commission payments
- Reservation of properties for sale
- Management of sales transactions
- Invoice management



### Proxima Advantage 2

Marketing made easy

Your website will be up and running within 3 weeks

As you can also list and promote preloved properties entrusted to you to sell, we have added in a new functionality for advertising and content:

With our new AI capability you can create brochures on your property assets for sale at a touch of a button. With integration to REA and Domain, you can upload this content and include in advertising to the Australian real estate market.

And if you have Proxima CRM, as an additional advantage lead created from your advertising campaign will be entered into your CRM system as a prospect.



### Proxima Advantage 3

Systems are made for people

Systems are in place for people. This is why we believe in also offering services which are unique to the industry. Services designed for real estate agents!

With Proxima Web you also have access to

- Helpdesk support
- In person product training
- Weekly recommendations on how you can use your website to gain a competitive advantage

With Proxima Web we help you build your brand, trust and reach so you can grow your business and delight your customers.



## Proxima Web

Contact us today to get started with your real estate website.

1.1 trillion of properties | 1700 users | 10x faster to market Proxima Web; Loved by our agents and their ecosystem of partners

Proxima Agents pay just \$500 per user per year or \$49 per month



